



Including local arrangements in annexes for:

MAIDEN ERLEGH SCHOOL

Initial approval:	June 2012
Review frequency:	Every three years
Date(s) reviewed:	May 2010, May 2011, Updated 2014, May 2017, May 2019, July 2022, June 2025

Contents

Definitions	3
Rationale.....	3
Principles	4
Aims	4
Scope.....	4
Monitoring and evaluating	5
Annex 1: Actions following a report of a bullying incident	6
Annex 2: Target bullying programme at Maiden Erleigh School	7

Definitions

Bullying is any act carried out by a group or individual, repeatedly over time against a target who cannot defend themselves, that intentionally causes harm, either physically or emotionally.

Harassment is unwanted behaviour which you find offensive or which makes you feel intimidated or humiliated. You do not need to have previously objected to something for it to be unwanted.

Bullying behaviour may be direct or indirect. Direct forms include physical violence and threats; verbal assaults and taunts; the destruction of property; extortion; unwanted sexual interest or contact. Examples of indirect forms of bullying include ignoring and the withdrawal of friendship; excluding; malicious gossip and spreading rumour; abusive or oppressive graffiti (this includes cyber-bullying and the sending of sexually explicit or suggestive messages, images, or videos).

Harassment is direct and includes spoken or written words or abuse, offensive emails, tweets or comments on social networking sites, images and graffiti, physical gestures, facial expressions, jokes.

Maiden Erlegh Trust takes all forms of bullying and harassment seriously and is particularly concerned to take action in relation to any incidents which involve identity-based bullying – relating for example to race, culture, country of origin, sexism, disability, giftedness, homophobia or circumstance (e.g. Young Carer, Adopted, Looked After status). In such cases these issues will be specifically addressed with the bully (and their parents where appropriate) in the course of post incident management.

The Anti-Bullying Procedures have been drawn up with reference to the DfE publication: [Preventing and tackling bullying Advice for headteachers, staff and governing bodies July 2017](#) and [The Equality Act 2010](#).

Rationale

There is no justification whatsoever for bullying or harassment and it will not be tolerated in any form.

Bullying or harassing behaviour is a problem for both the perpetrator and the victim and is addressed in positive and constructive ways which provide opportunities for growth and development for the bully and victim alike.

We believe that taking proactive, preventative action is key. This is best done through the development of a school ethos based on mutual respect, dignity of the individual, inclusion, fairness and equality.

Effective management of bullying and harassment is a shared responsibility, and strategies involve school staff and parents working together (sometimes with other professionals) with pupils/students who are the victims or perpetrators of bullying or harassment.

Principles

All members of staff and all pupils/students have a right to carry out their work in a supportive, safe and positive environment.

Every pupil/student has the right to learn, to experience success and fulfil his/her potential.

Every teacher has the right to teach, to experience success and fulfil his/her potential.

Every member of the school community has the right:

- To feel valued
- To feel supported
- To feel safe and secure and protected from harm, humiliation and abuse
- To a healthy, pleasant environment
- To be treated with respect
- To be treated with dignity
- To be treated fairly

Aims

- To promote an atmosphere in which there is a respect for others, recognition of others' achievements and differences are valued.
- To promote an atmosphere which is conducive to learning.
- To promote behaviour which is in the best interests of all members of the school.
- To promote good manners towards all members of the school community, to visitors and to members of the community outside the school.
- To eliminate intimidating and aggressive behaviour in line with our ethos of providing a secure, caring community where bullying and harassment is not tolerated in any form.
- To clarify to stakeholders our methods for responding to incidents of bullying and harassment and for fulfilling our statutory responsibility to respect the rights of pupils/students and to safeguard and promote their welfare.

Scope

This policy applies to incidents of bullying and harassment which take place on school premises, on the journey to and from school (while pupils/students are in uniform), on off-site activities organised by school and while using school equipment.

The School is not **legally** responsible for bullying or harassment which takes place elsewhere and the School owes no general duty to its pupils to supervise their activities after they have left its charge, since it is not directly in control of them. (Bradford Smart v Sussex County Council 2002).

Maiden Erlegh Trust will, however, respond positively to any information it receives about bullying or harassment outside school thus:

1. If a pupil/student is responsible for bullying or harassing other pupils/students outside school, including cyber-bullying, then this matter will be investigated. The bully's parents will be informed so they can take appropriate action. The school will consider whether it is appropriate to notify the police.
2. If a pupil/student is found to be the victim of bullying or harassment outside school then help and support will be offered and advice given on how to avoid further incidents in future. The victim's parents will be informed so they can take appropriate action.
3. If there are more general concerns about pupil/student safety outside school then the local police will be contacted and their help sought in making the area around the school premises more secure.
4. If information is received that a pupil/student is being bullied by a sibling outside school this will usually initially be discussed with the parents. If concerns persist then the matter will be referred to the Children's Services.
5. If a pupil/student is being bullied by pupils/students of another school the Headteacher of that school will be informed and asked to deal with the matter.

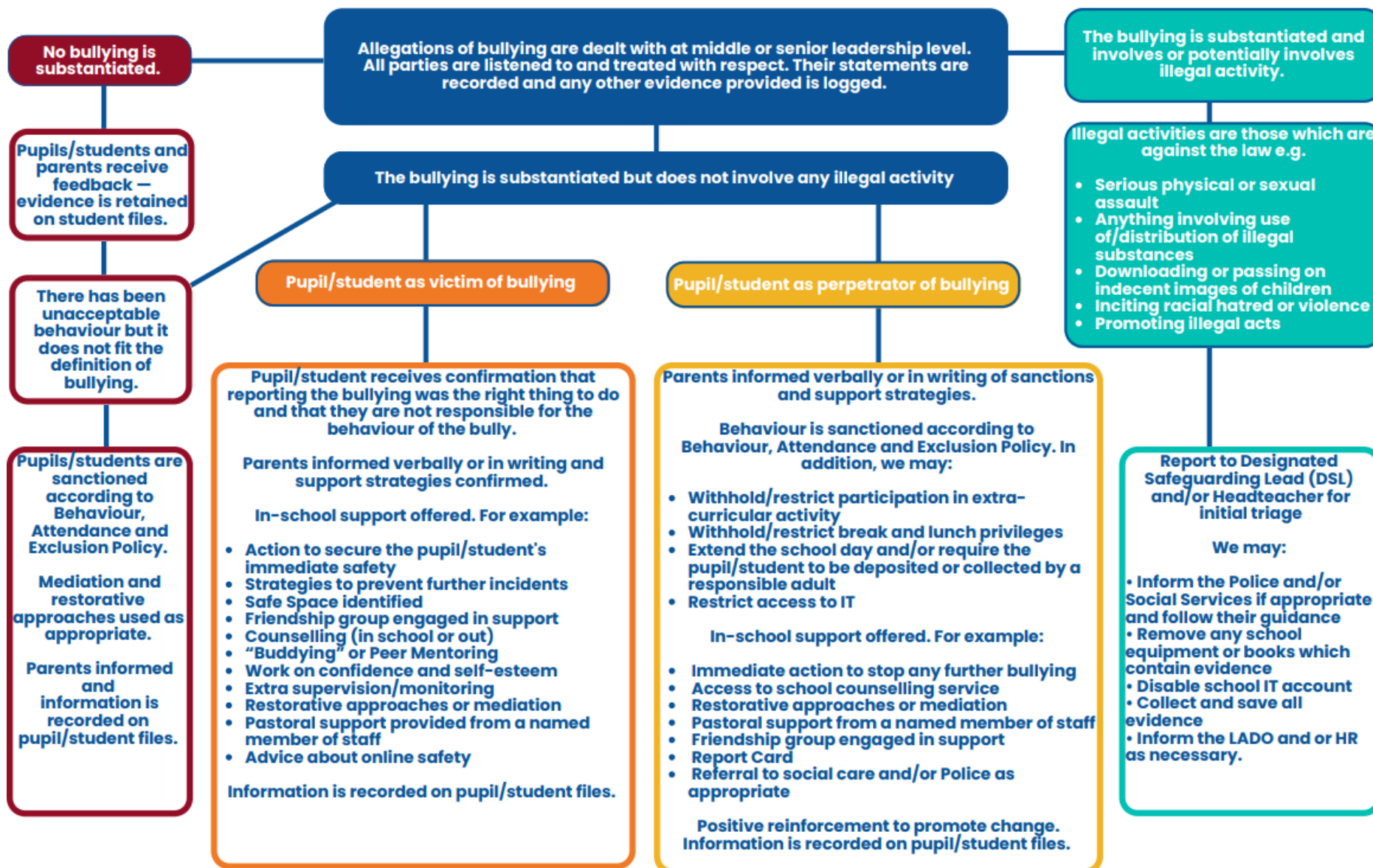
Maiden Erlegh Trust recognises that staff can be the victim of bullying or harassment. If a member of staff is the victim of bullying or harassment by a pupil/student then the same protocols and procedures will apply. If they are targeted by a parent then possible actions are outlined in our document on Unacceptable Communication which can be found [here](#). In the event that the perpetrator is a member of staff this will be raised with Human Resources who will conduct an investigation.

Monitoring and evaluating

Each incident of bullying or harassment falling within the school definition will be recorded. Any incidents involving race, culture, country of origin, sexism, disability, giftedness, homophobia, biphobia or transphobia will be identified.

Incidents of bullying will be reported to the Headteacher and School Advisory Board via the termly School Performance Review and any actions arising will be addressed through the School Improvement Plan.

Annex 1: Actions following a report of a bullying incident



Annex 2: Target bullying programme at Maiden Erlegh School

In conjunction with this policy, Maiden Erlegh School has a Target Bullying programme.

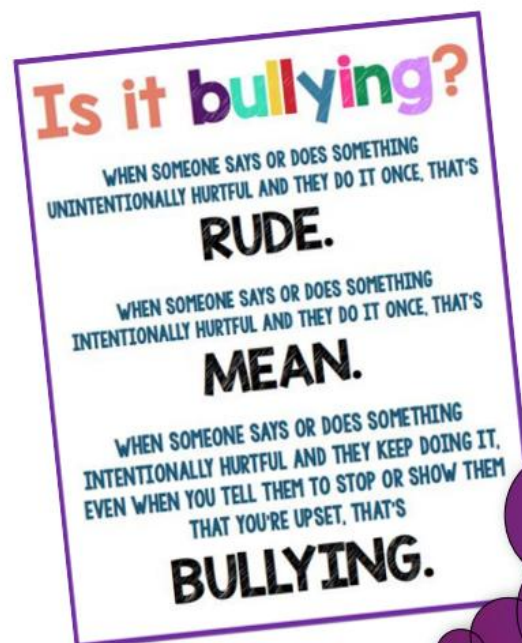
The school has previously worked with the Anti Bullying Alliance on the 'All Together Now' and 'United Against Bullying Programmes' and awarded Gold Status for the work completed on preventing bullying.

For academic year 2025 – 2026 we are rolling out a Peer Mediator programme, delivered by Year 12&13 students, supported by trained Year 10 students who will support younger years, and be another avenue for supporting and reporting.

Anti-Bullying activities of the school, include:

- Annual audit of Anti Bullying Provision in School and improvements included in School Improvement Plan
- Assemblies to each year group every year
- Posters all over school with details of how to report bullying
- MES Guide to Anti Bullying for students
- Anti-Bullying work for all Head of Year to use with students
- Training for Staff on preventing Bullying
- Anti-Bullying Week implemented each year
- Target Bullying email address

The Member of the Senior Leadership Team responsible for Anti-Bullying is Miss Burns, Deputy Headteacher.



If you are being bullied,
what can you do?

1. Tell your teacher or parent/carer
2. Tell a friend and ask them to help you
3. Email school

mestarget@maidenerleghtrust.org